

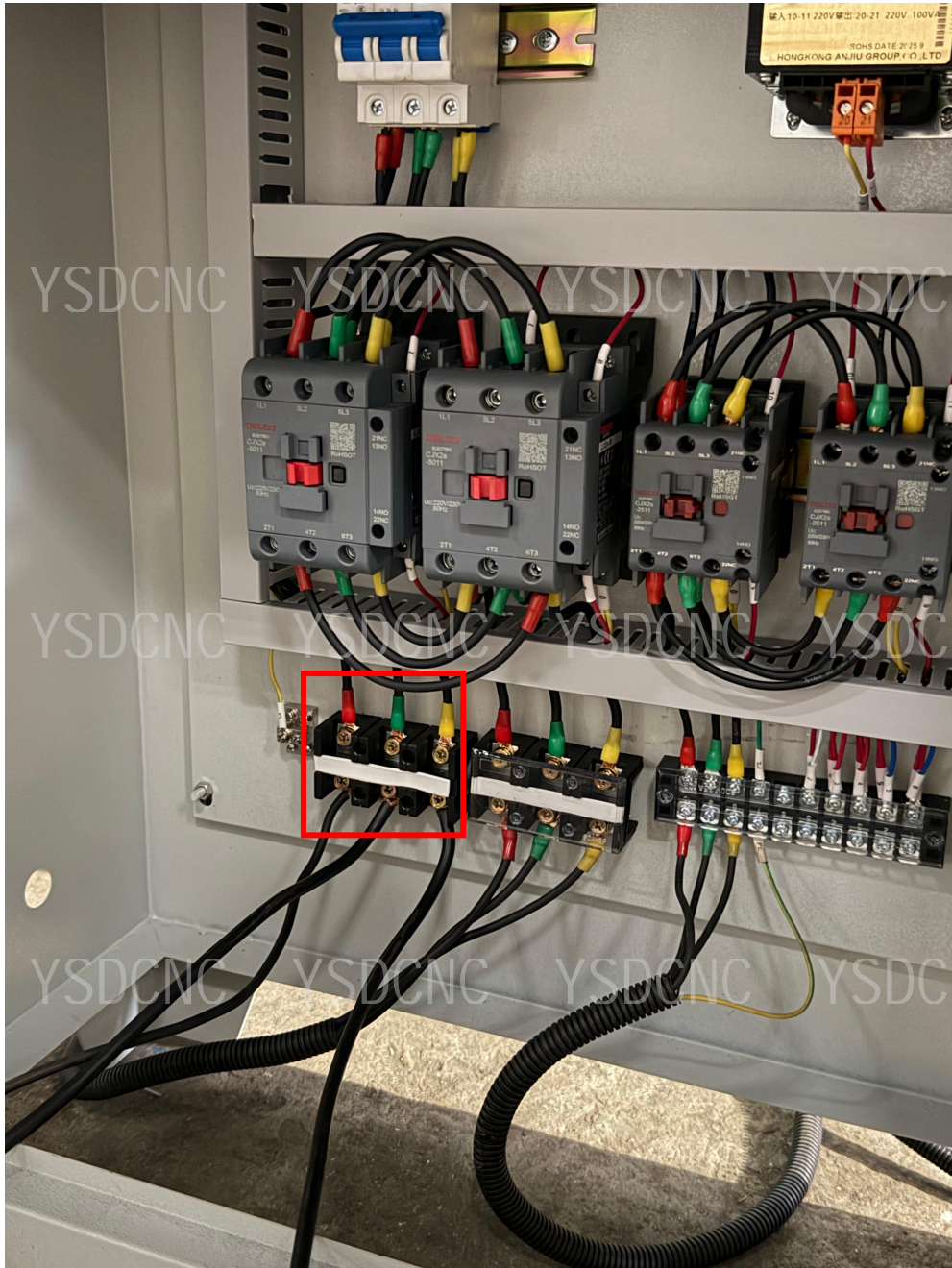
机器使用前需要给两个减速机加油

打开图中圈出的盖，加入减速机油或者机油

The machine needs to be lubricated with oil for both gearboxes before starting.

Open the cover circled in the picture and add gearbox oil or machine oil.





接入这三根线

Connect these three wires



打开急停开关，即可使用遥控操作卷板机

Once the emergency stop switch is activated, the plate rolling machine can be operated using the remote control.



右旋图中按钮，就可以切换成控制台操控机器

Rotate the button in the image to the right to switch to console control of the machine.



图中红色方框里的按钮为
控制板材的前进后退
图中蓝色方框里的按钮为
控制辊的上下运行

The button in the red box in the image controls the forward and backward movement of the sheet metal.

The button in the blue box controls the up and down movement of the roller.



用遥控操作辊向上抬起
放入板材

Use the remote control to lift the roller upwards
and place the sheet material in.





再用遥控操作辊向下压紧板材

Then use the remote control to move the roller downwards and press the board firmly.





使用图中圈出的两个键来控制辊带动板材前后卷圆成型

Use the two keys circled in the diagram to control the rollers to roll the sheet material back and forth into a circular shape.





卷圆完成，使用遥控操作将辊向上抬起

Once the roll forming is complete, use the remote control to lift the roller upwards.



抬起完后将图中所圈的棍拔出

After lifting, pull out the stick circled in the picture.





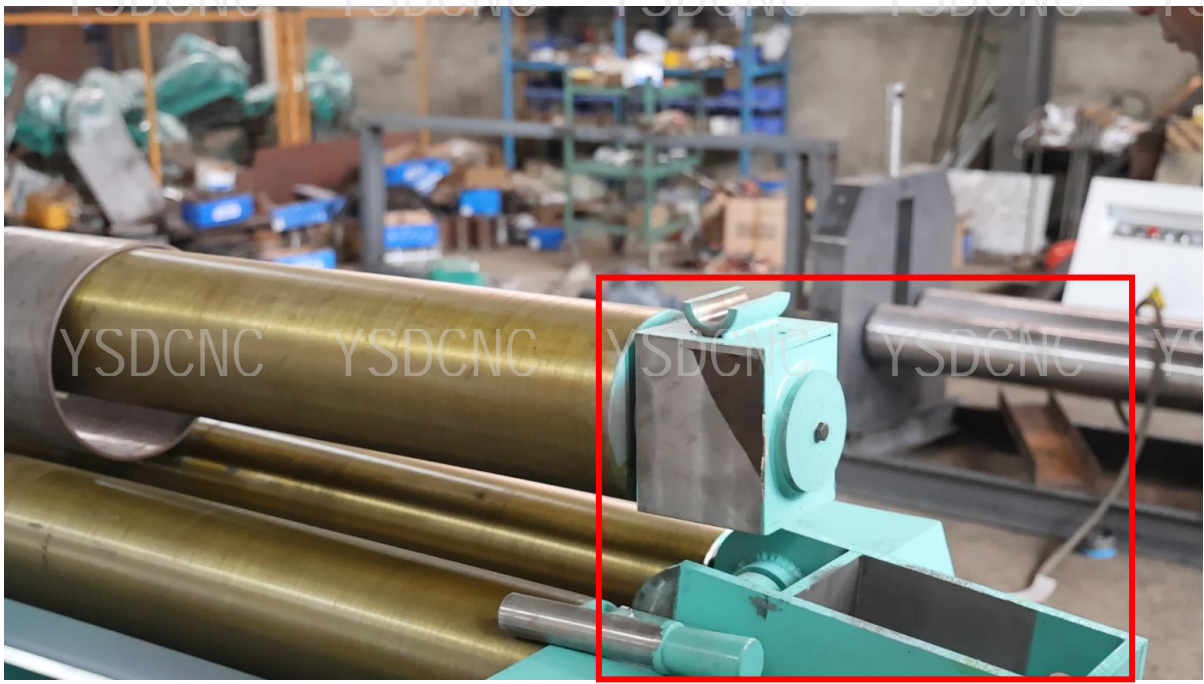
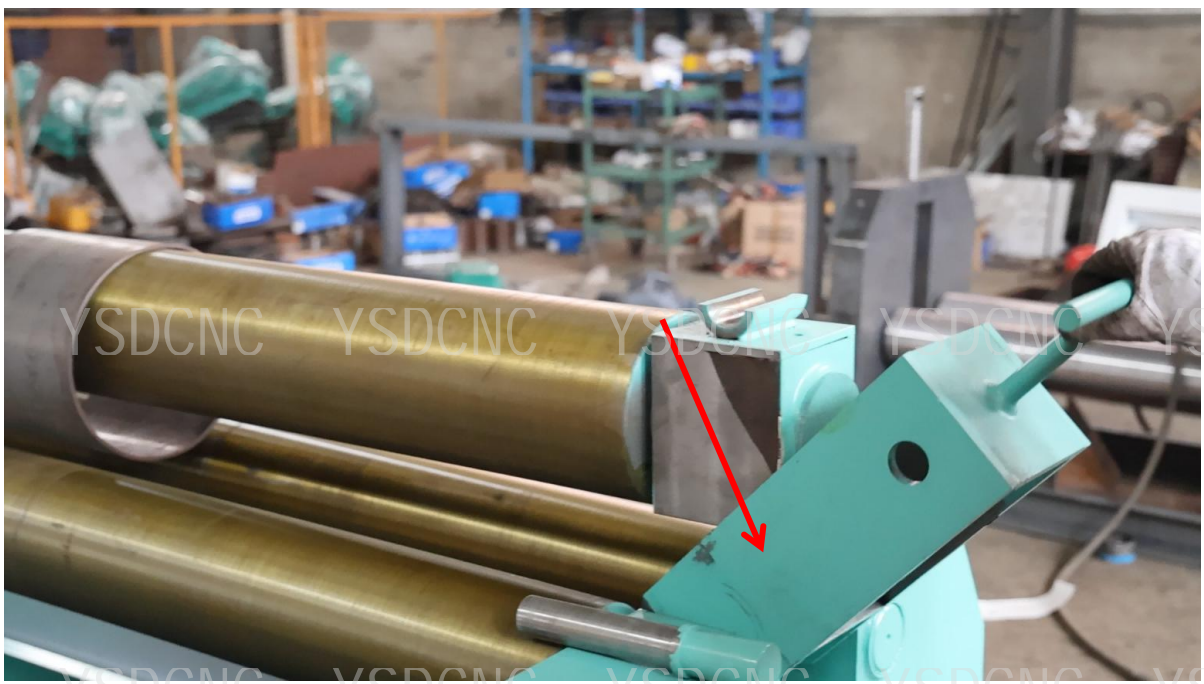
拔出棍后，继续操作辊向上抬起
握住把手向下打开

After pulling out the rod, continue operating the roller to lift it upwards. Hold the handle and open it downwards.



直至完全打开，就可以把卷圆成型的材料拿出来了

Once fully opened, the rolled-up material can be removed.





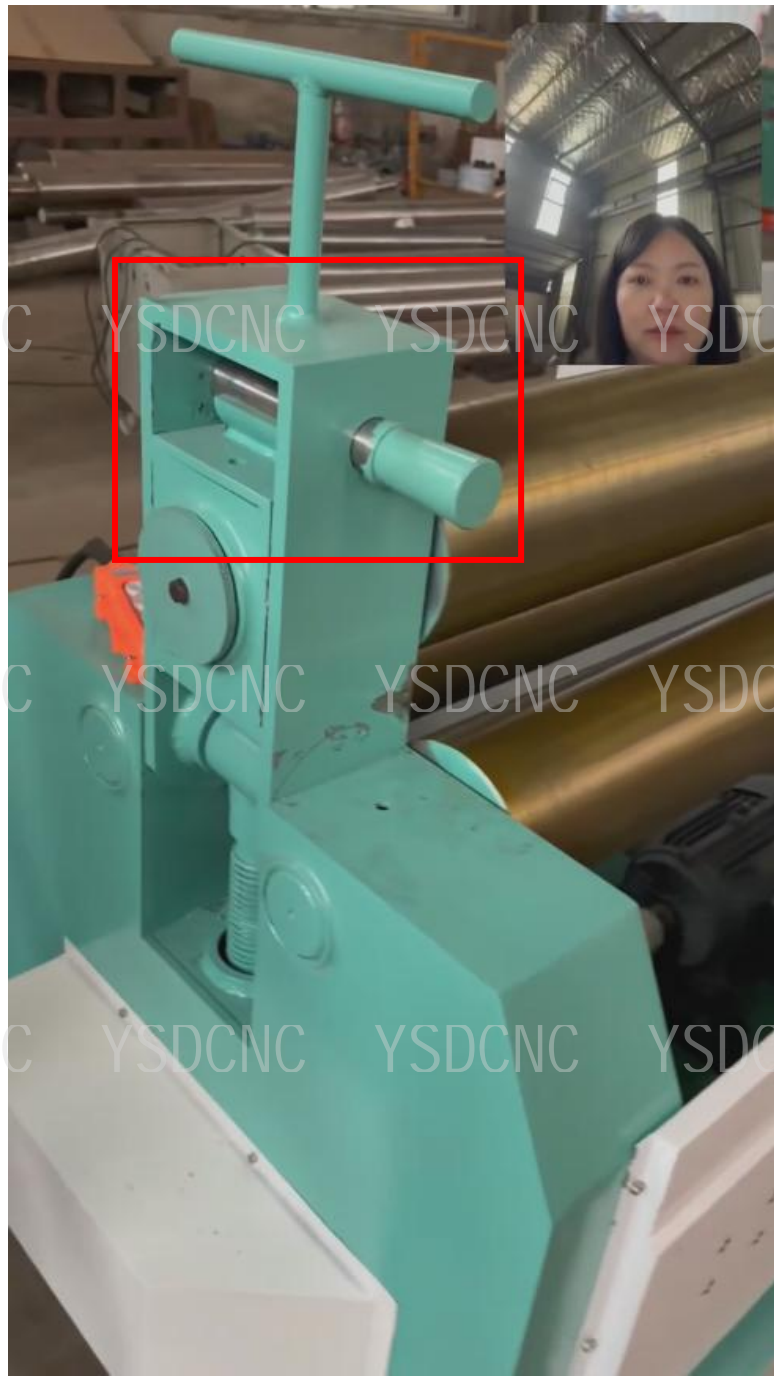
材料拿出后，握住把手向上抬放回原位

After taking out the material, hold the handle and lift it upwards to return it to its original position.



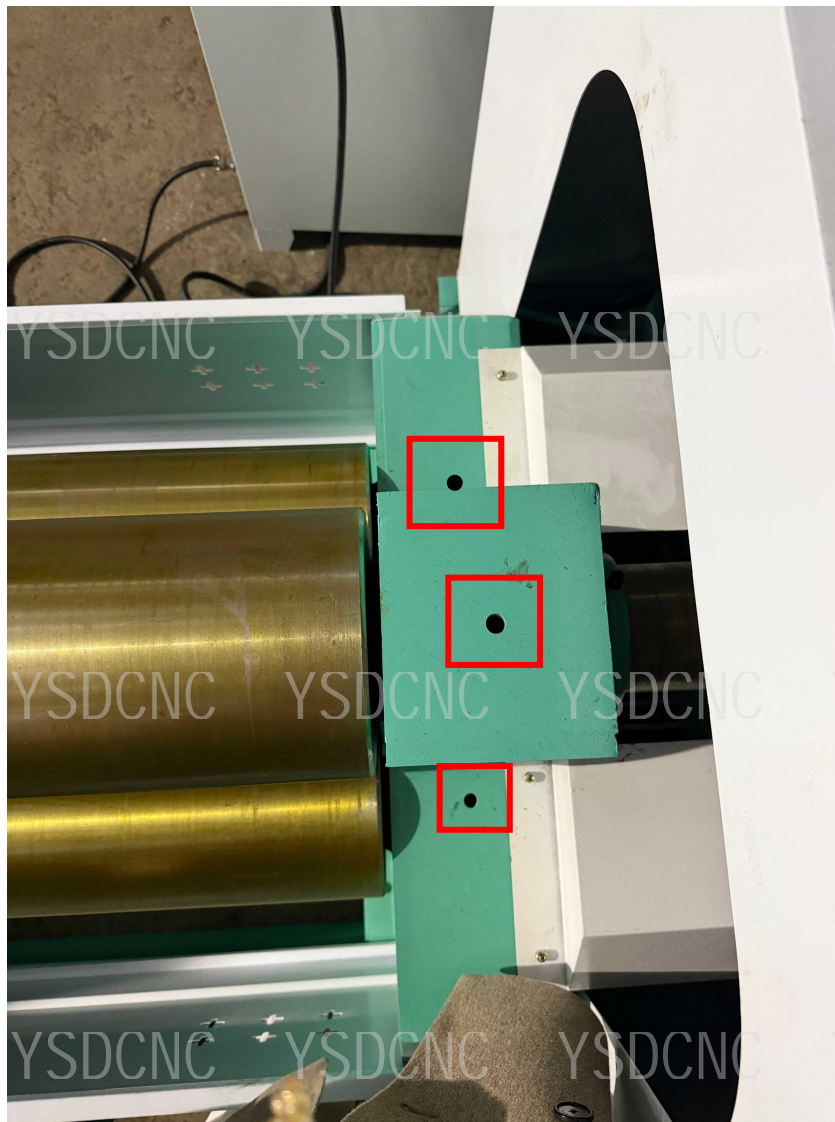
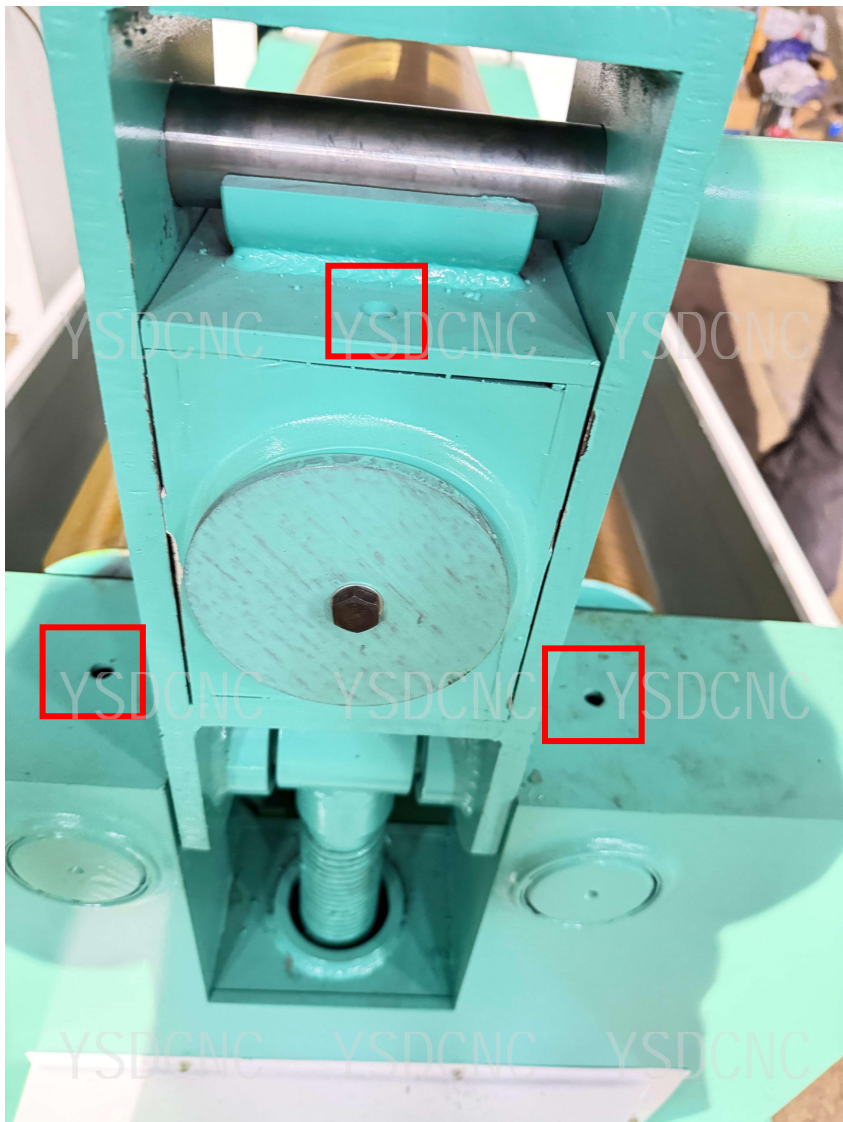
再用遥控操作把辊向下压紧

Then use the remote control to press the roller downwards.



然后把棍子塞回即可

Then simply put the stick back in.

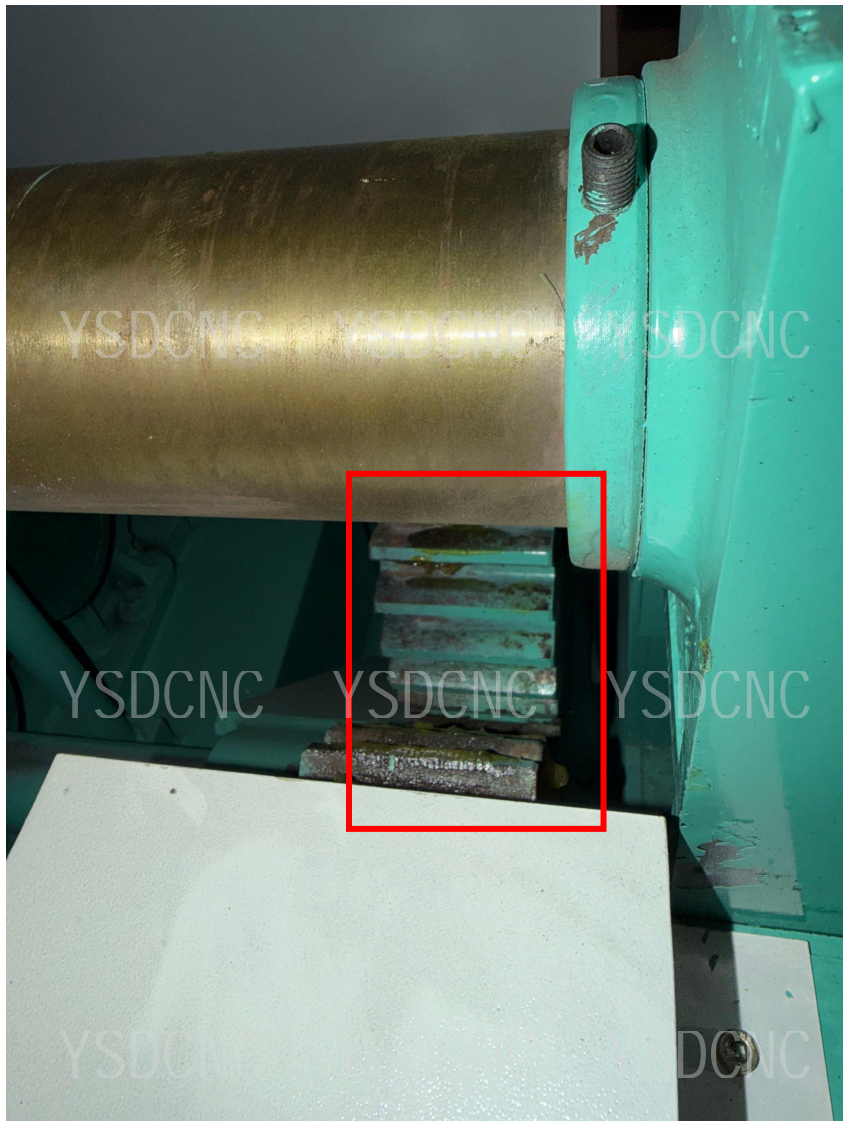


图中圈出的六处位置定期加注
机油Add engine oil regularly to
the six locations circled in the
picture.

图中丝杆，定期加注机油

The lead screw in the picture needs to be lubricated regularly.





机器齿轮定期抹黄油

Grease the machine gears regularly



(黄油润滑脂轴承齿轮轨道)
(Grease-lubricated bearings, gears, and rails)